



HUXEN CORPORATION

Presentation for ,2024H1

Date : AUG 15,2024

Agenda

- Company Profile
- 2024H1 Revenue & Results

Disclaimer

- This presentation and its accompanied information include operating forecast, financial condition and business projection, etc. which are predictive information gathered from company's internal and external sources.
- The operating result, financial condition and operating forecast actually created by the company in future may differ from these expressed or implied predictive information. The reasons may include, but not limit to market risk, market demand and the ability which the company can deliver high quality products, etc.
- The forecast mentioned in this presentation reflects the current belief of the company as of the date of this presentation issued. The company undertakes no obligation to remind or update the information for the change or adjustment in the future.

Company Profile

About Huxen

Business Type : Other Electronic

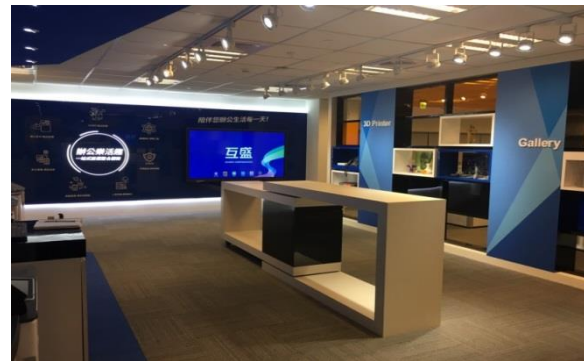
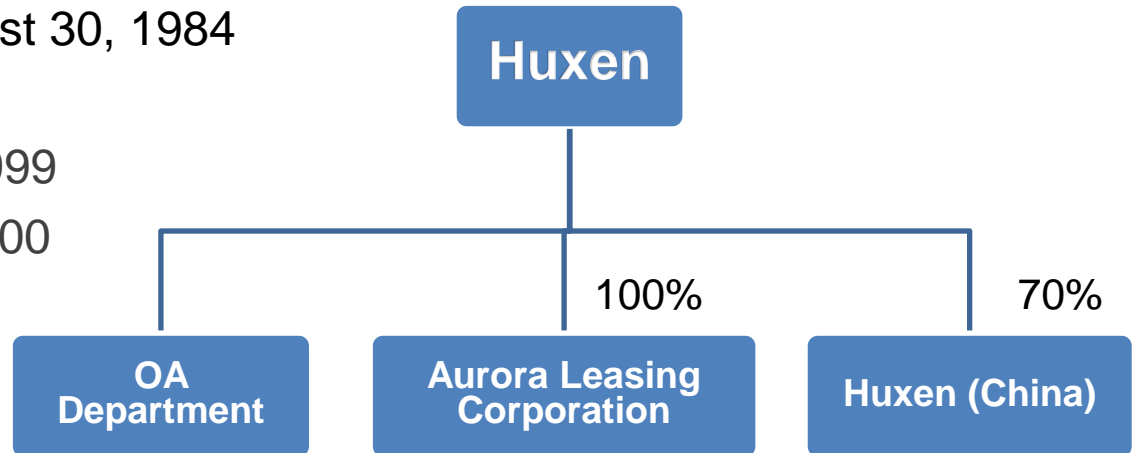
Date of Incorporation : August 30, 1984

Capital : 1.44 billion

Date Listed(OTC) : June 03,1999

Date Listed : September 11,2000

Number of employee : 383



2024H1

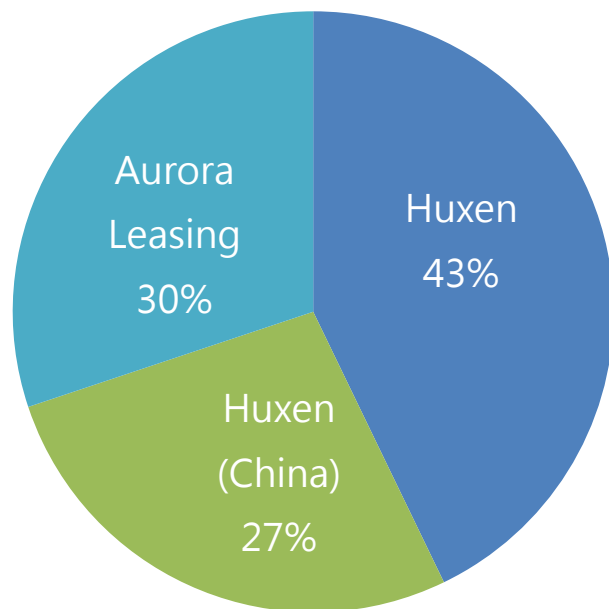
Revenue & Results

Total operating revenue

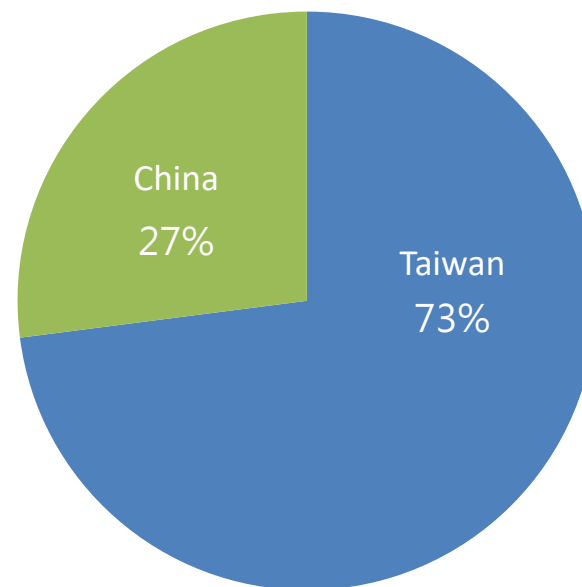
(in billion NT\$)

2024H1 1.38			
Huxen :	0.59	Taiwan :	1.01
Aurora Leasing :	0.42	China :	0.37
Huxen (China) :	0.37		

2024H1(By Company)



2024H1(By Area)



Summary of consolidated profit and loss

(in million NT\$)

	<u>2024Q2</u>	<u>2023Q2</u>	<u>YoY</u>
Net Sales	1,376	1,442	-5%
Gross Profit	487	504	-3%
Operating Expense	277	279	-1%
Operating Income	210	225	-7%
Non-op. Income (Expense)	13	16	-19%
Income Before Tax	223	241	-7%
Consolidated Net Income	177	190	-7%
Attributable to:			
Minority shareholders	9	13	-31%
Shareholders of Aurora	168	177	-5%
Earnings Per Share (NT\$)	1.16	1.22	-5%

Summary of consolidated Balance Sheet

(in million NT\$)	2024Q2	%	2023Q2	%
Cash and Cash Equivalents	3,300	43%	3,252	42%
Trade and note receivables, net	322	4%	337	4%
Inventory, net	186	2%	156	2%
Long-Term Investments	619	8%	656	9%
Fixed Assets, Net	2,753	36%	2,705	35%
Total Assets	7,742	100%	7,686	100%
Short-term debt	1,082	14%	1,030	13%
Trade and notes payables	740	10%	176	2%
Long-term debt	1,100	14%	1,050	14%
Total Liabilities	3,416	44%	3,372	44%
Shareholders' Equity	4,325	56%	4,314	56%